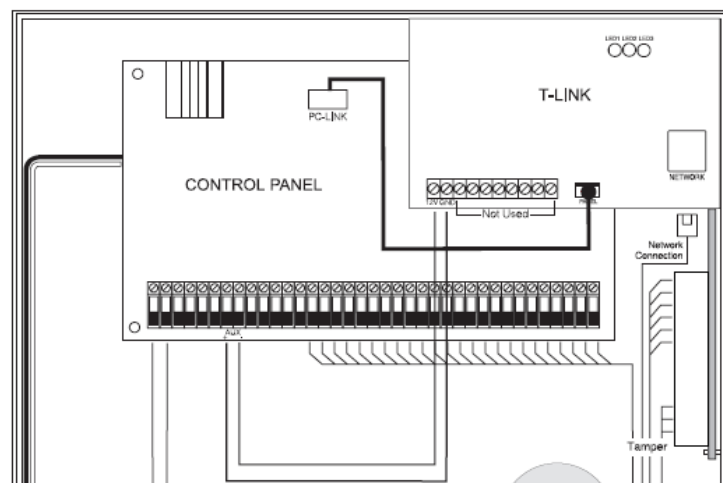


## Configuring the T-Link for Uploading/Downloading Operation using the DLS2002SA Software and TL1 Server

### Connecting the T-Link to the Control Panel

1. Remove power from the panel before making any connections to the T-Link module.
2. Connect the 12 VDC and the GND to the AUX output of the control panel.
3. Connect the Network Connection to the RJ45x.
4. Connect the supplied four pin connector from the T-Link to the PC-Link header of the control panel.



### Programming the T-Link

Section [001]	T-Link IP Address
Section [002]	Subnet Mask
Section [003]	Receiver IP Address (The computer's IP Address)
Section [004]	T-Link Gateway
Section [999]	Restart your T-Link, enter data [55] in Section [999]

### Setting up the TL1 Server Software:

1. Download the TL1 Server from the DSC website

Go to [www.dsc.com](http://www.dsc.com) and login to the website. Go to Products → Software → SurGard and a new web page will appear. Scroll down the page. Below the heading "T-Link Ethernet Communicator", save the following file to your computer:

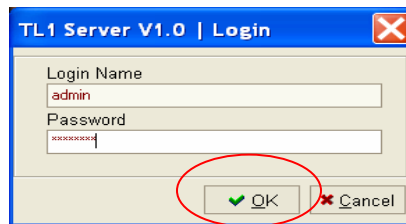
**TL1 Server V1.0 (14.7MB-exe)**

## 2. Install the TL1 Server Software

Double-click on downloaded file and follow the Wizard to install the TL1 Server Software. Once installed, the icon (shown below) will appear on the desktop. Double-click on the icon to run the program.



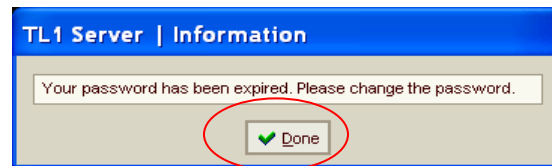
## 3. Logging in to the TL1 Server Software:



Log in by entering the correct Login Name and Password.

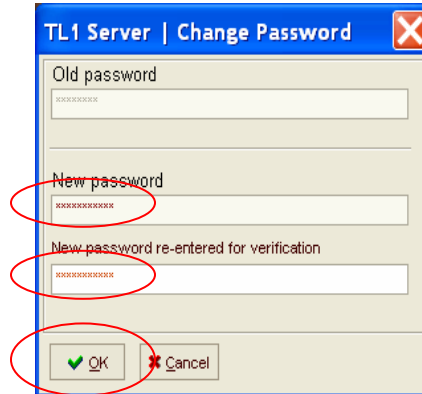
Login Name	admin
Password	password

## 4. Password Expired:



The following 'password expired' message will appear. This is done for security reasons to ensure the password is changed from default to prevent unauthorized access. Click the 'Done' button.

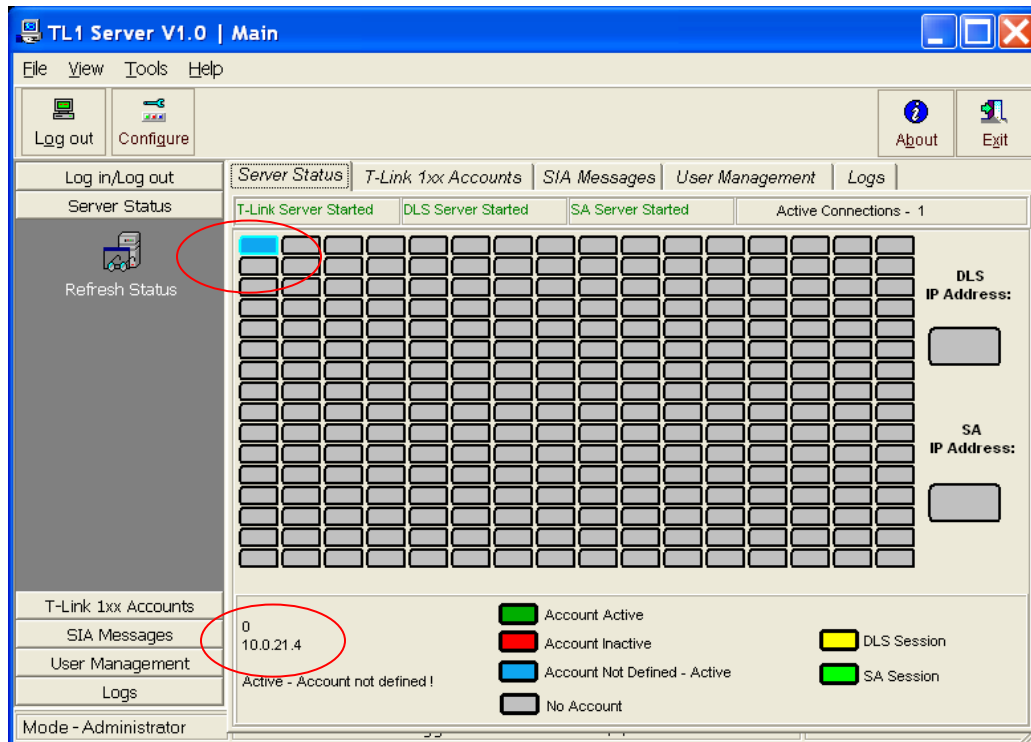
5. Change the Password:



Enter the new password and re-enter the password for verification in the correct field, then click 'OK'.

**Note: The expiration date of the password may be extended under the USER MANAGEMENT tab**

6. Verify the T-Link Account is Active:



The Server Status is used to indicate the status of each T-Link module connected:

- Grey box: No account connected
- Green box: T-Link module active
- Blue box: T-Link module connected but not defined

To view the IP address programmed for any active account, simply roll the mouse over the green or blue box. The IP address will be displayed in the bottom left part of the screen.

**Note: The TL1 Server must be running in order to connect to the panel via the DLS2002 SA software.**

### Setting up the DLS2002SA Software

1. Download the DLS2002SA Software:

Go to [www.dsc.com](http://www.dsc.com) and login to the website. Go to Products → Software → DSC/DLS and a new web page will appear. Under the pull-down menu select DLS2002SA and a new web page will appear. Scroll down the page, and below the heading 'DLS2002SA Main Program (Required Files)' save the following files to your computer:

**DLS\_2002SA\_Engine\_Only\_Setup - 18.1MB**  
**DLS\_2002SA\_SP2 (Service Pack) - 18.9MB**

Below the heading 'DLS2002SA Drivers' save the following files:

**DLS2002 TL-250 Driver.exe**  
**DLS\_2002SA\_PC4020\_V3.3.exe, DLS\_2002SA\_PC4020\_V3.5.exe or**  
**DLS2002 PC5020 v3.2SA.exe (it is only necessary to download the specific panel driver for the panel that you are using)**

2. Install the Downloaded files:

Double-click and install each of the downloaded files in the order listed below:

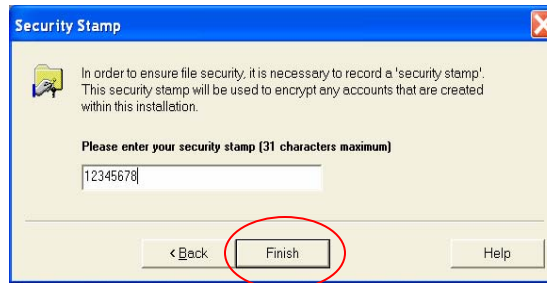
**DLS\_2002SA\_Engine\_Only\_Setup - 18.1MB**  
**DLS\_2002SA\_SP2 (Service Pack) - 18.9MB**  
**DLS2002 TL-250 Driver.exe**  
**DLS\_2002SA\_PC4020\_V3.3.exe, DLS\_2002SA\_PC4020\_V3.5.exe or**  
**DLS2002 PC5020 v3.2SA.exe (it is only necessary to install the specific panel driver for the panel that you are using)**

3. Run the DLS2002SA Software:

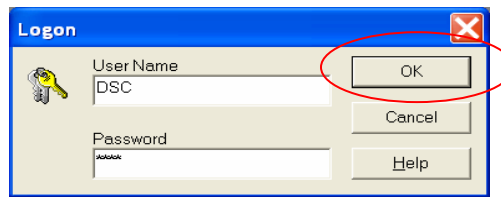
Once the software has been installed, the icon (shown below) will appear on the desktop. Double-click on the icon to run the DLS2002SA software:



4. The Security Stamp is used to encode every customer file to prevent unauthorized copying of the files. Enter a Security Stamp (up to 32 characters, case-sensitive) and click the 'Finish' button. Keep record of the Security Stamp as it will be needed if the software ever has to be reinstalled.



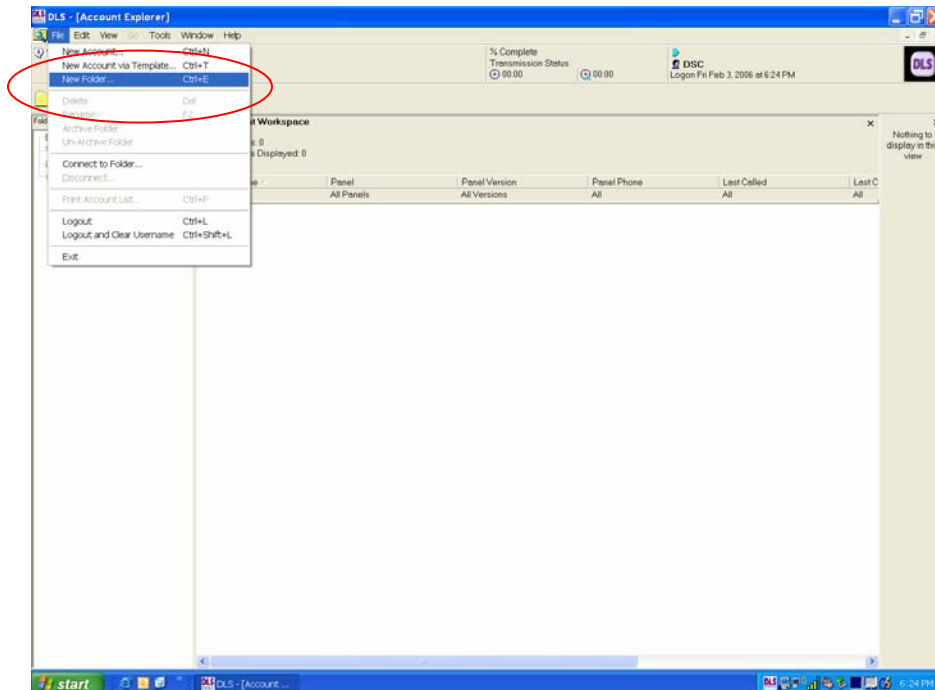
## 5. DLS2002SA Software Log in



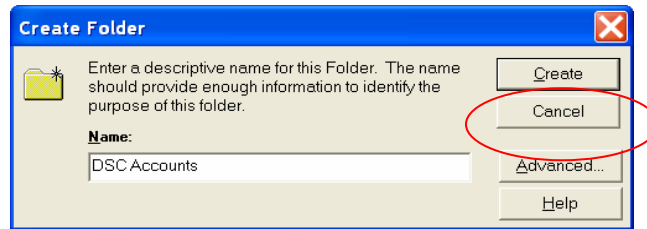
Enter the user name and password listed below to log on to the DLS2002SA program:

User Name	DSC
Password	1234

## 6. Create a New Folder:

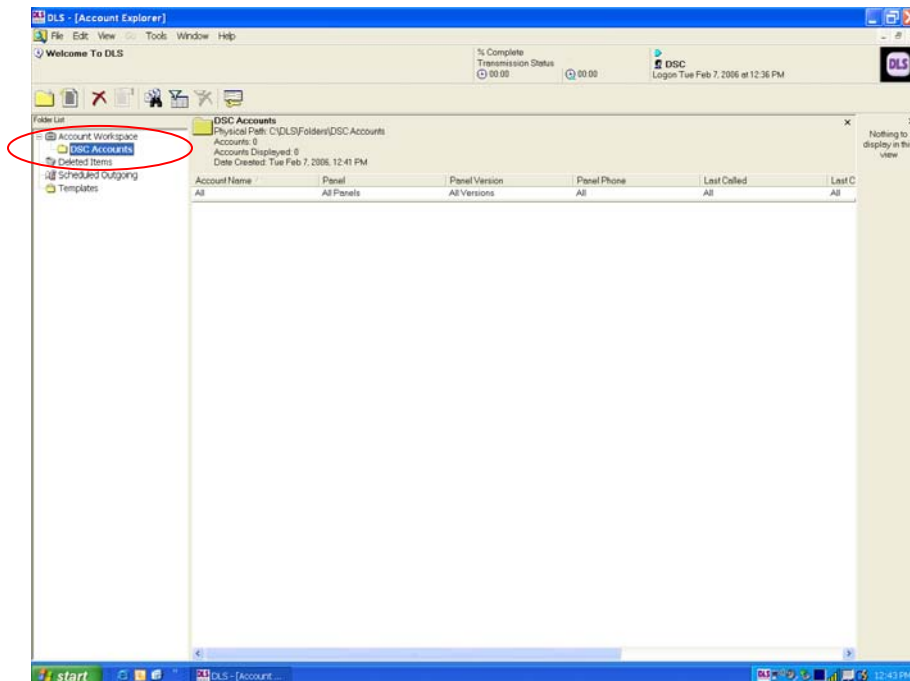


Once you logged into the DLS2002SA software click 'File' then click 'New Folder'. The following box will appear:



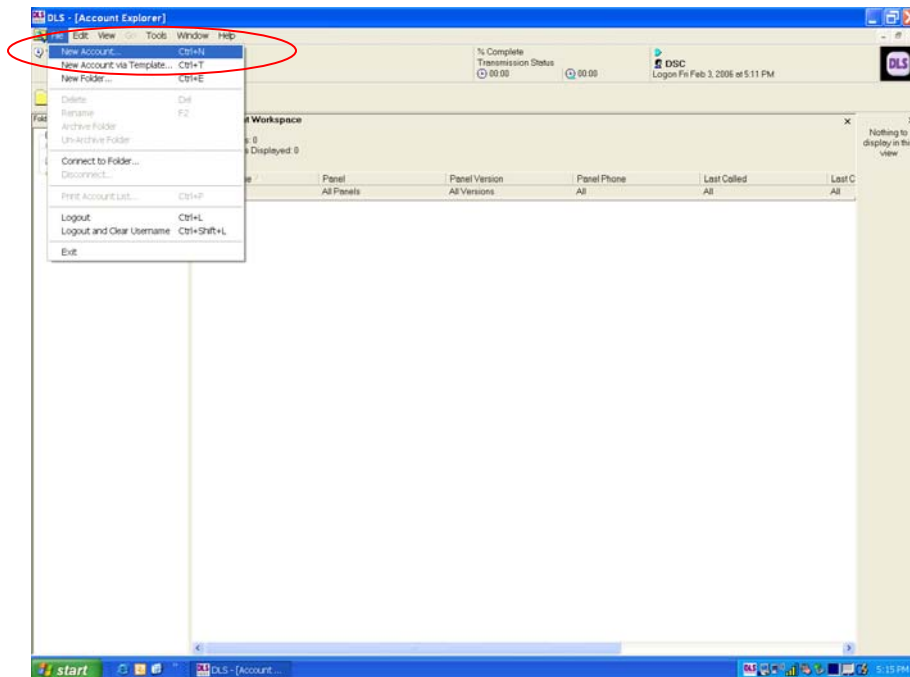
Enter the name for the folder to be created, then click 'Create'.

7. Verify the New Folder is Created:



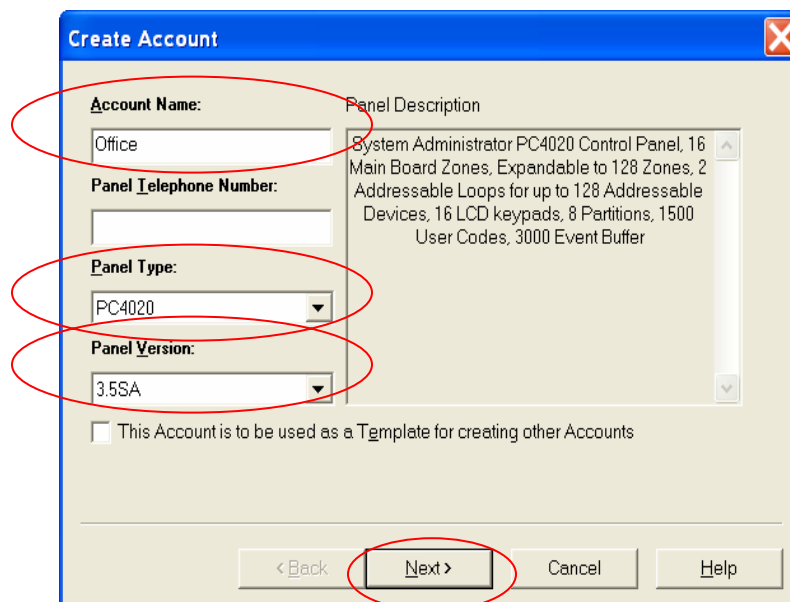
Verify the new folder has been created and is displayed below the Account Workspace section.

## 8. Creating a New Account:



Click 'File' then click 'New Account'.

## 9. Entering the Account Information:



Enter an Account Name, Panel Type and Panel Version, then click 'Next'.

**10. Entering the TCP/IP Settings:**

The screenshot shows the 'TCP/IP Settings' dialog box. The IP Address field is set to 10.0.21.4. The TCP/IP Wait Time is 12. The TCP/IP Port is 3062. The 'Connect to TLink 1' checkbox is checked. The Receiver IP Address is 0.0.0.0 and the Receiver Port is 3064. The Receiver Password is masked with asterisks. The TLink Account Identifier field is empty. The 'Update Now' button is visible. The 'Next >' button is highlighted with a red circle.

Enter the IP address of the T-Link in the appropriate field. Select the Connect to T-Link 1 box (so it has a checkmark), then click 'Next'.

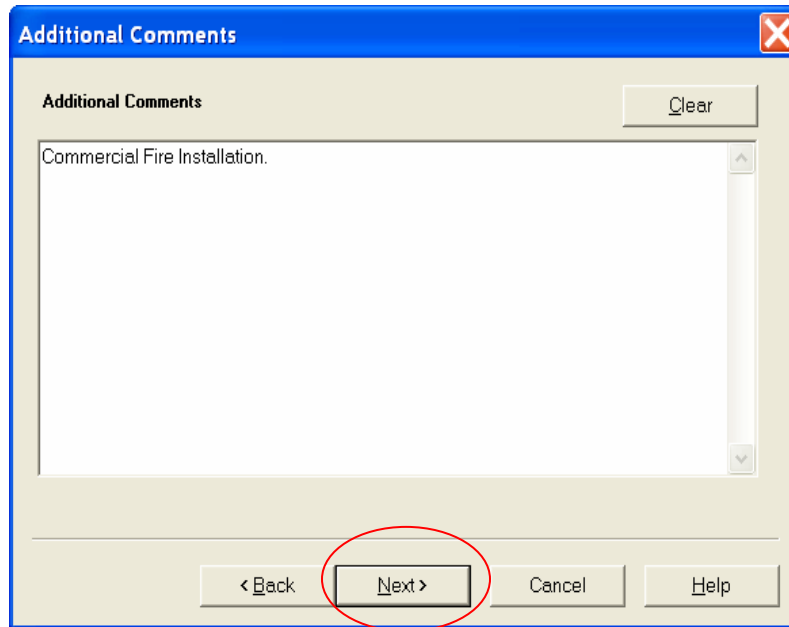
**Note: Do not use leading zeros when entering the IP address**

**11. Entering the Customer's Information:**

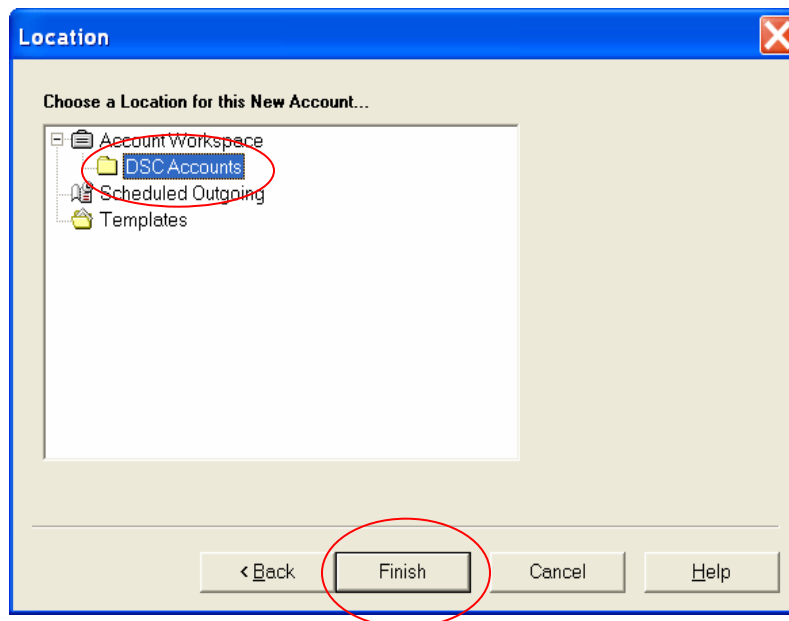
The screenshot shows the 'Customer Information' dialog box. The 'Company' field is set to DSC. The 'Contact' field is John Smith. The 'Department' field is Technical Support. The 'Address' field is 3301 Langstaff Road. The 'City' field is Concord. The 'Province/State' field is Ontario. The 'Postal/Zip Code' field is L4K 4L2. The 'Voice Telephone Number' and 'Email Address' fields are empty. The 'Clear' button is visible. The 'Next >' button is highlighted with a red circle.

Enter the customer's information (if required), then click 'Next'.



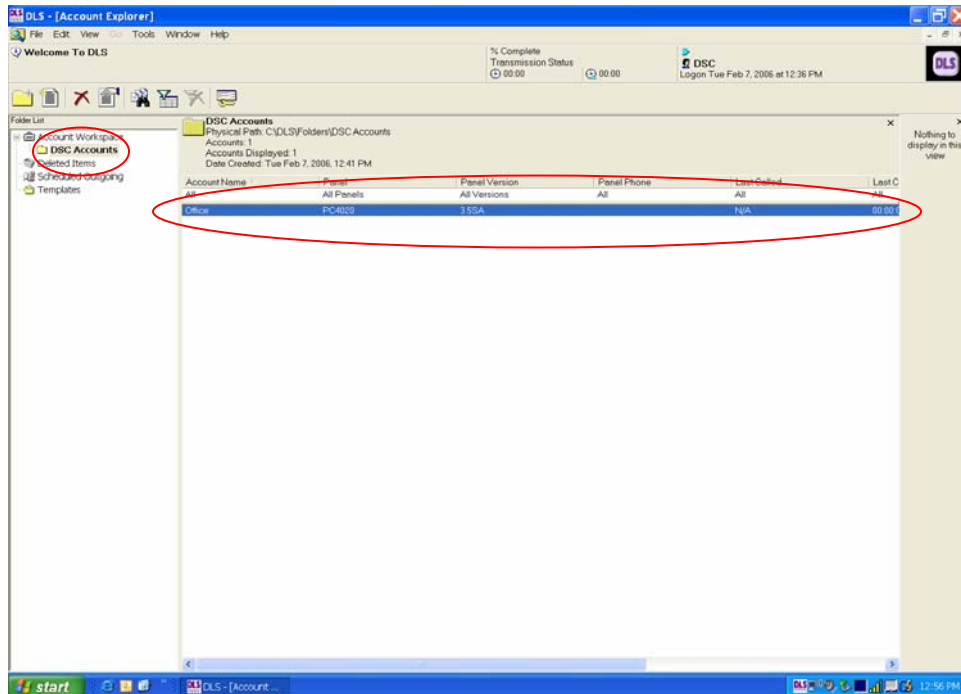
**12. Entering Additional Comments:**

Enter any additional comments (if required), then click 'Next'.

**13. Select the Folder to Store the New Account:**

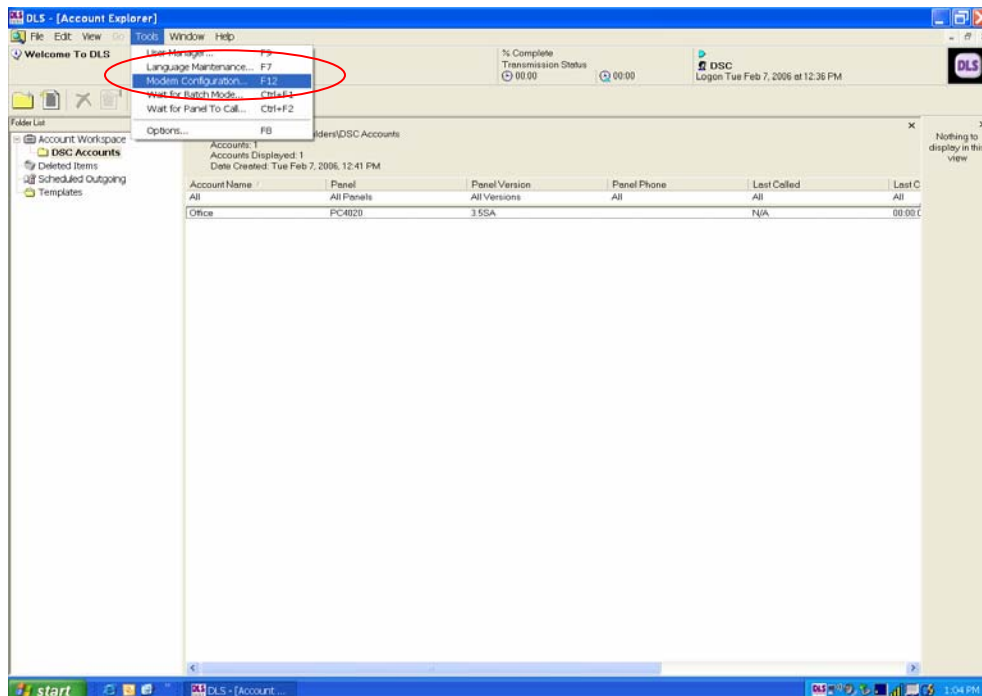
Click the folder to store the new account into. The Folder should be highlighted, then click 'Finish'.

#### 14. Verifying the New Account is Created:

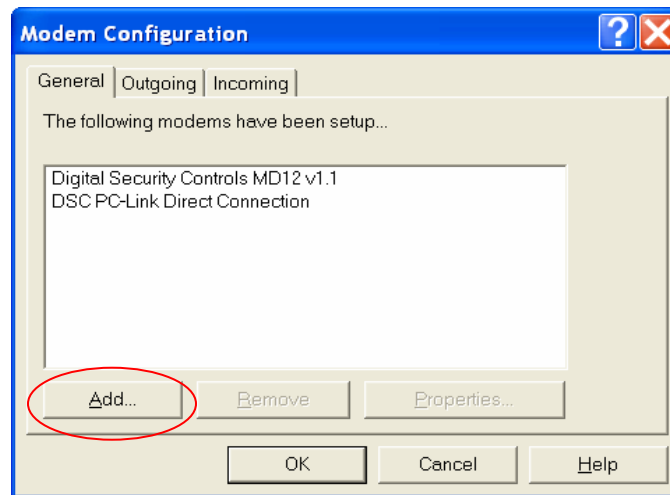


The account should be displayed. If not, verify the correct folder is highlighted in the Folder List on the left side of the screen.

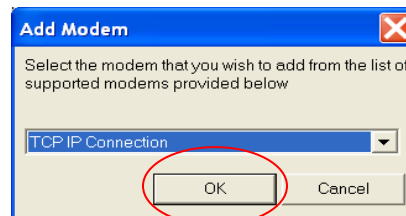
#### 15. Adding TCP IP Support:



Click 'Tools' then click 'Modem Configuration'. The following box will appear:

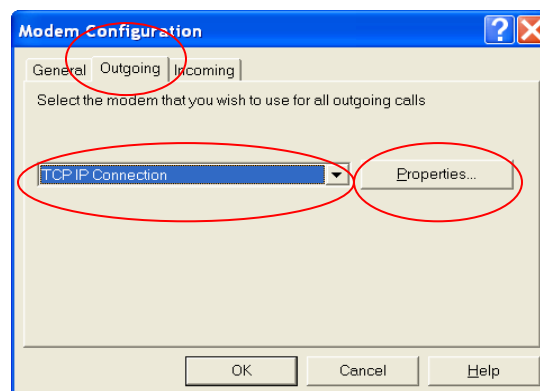


TCP IP support must be added to the DLS2002 software. Click 'Add'.

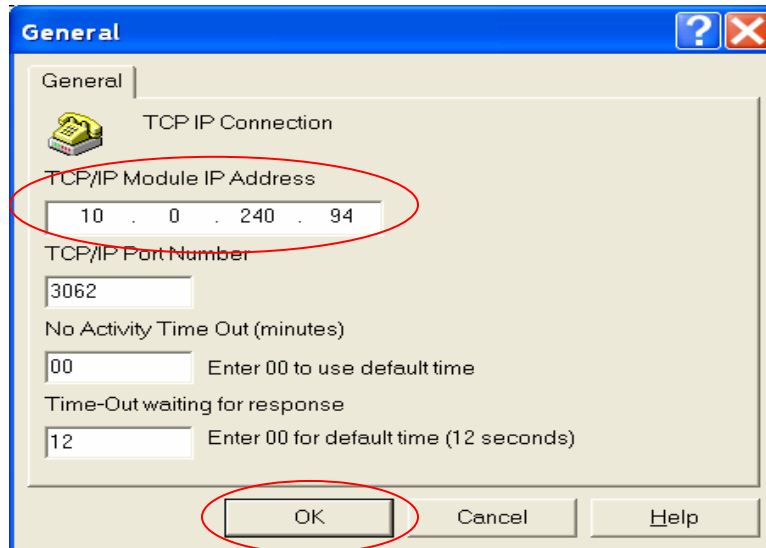


Use the pull-down menu to select 'TCP IP Connection', then click 'OK'.

**16. Configure Outgoing Calls to use TCP IP Connection:**

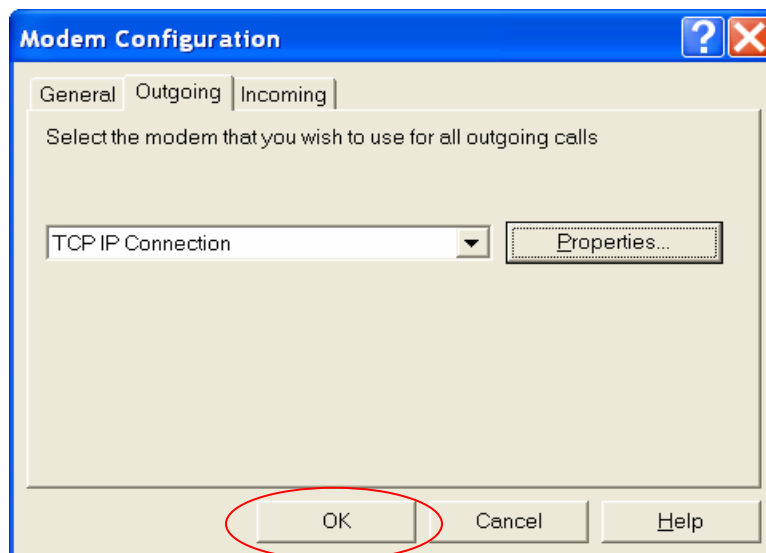


Click the *Outgoing* tab and under the scroll bar select 'TCP IP Connection' then click 'Properties'.

**17. Setting the IP Address of the Server:**

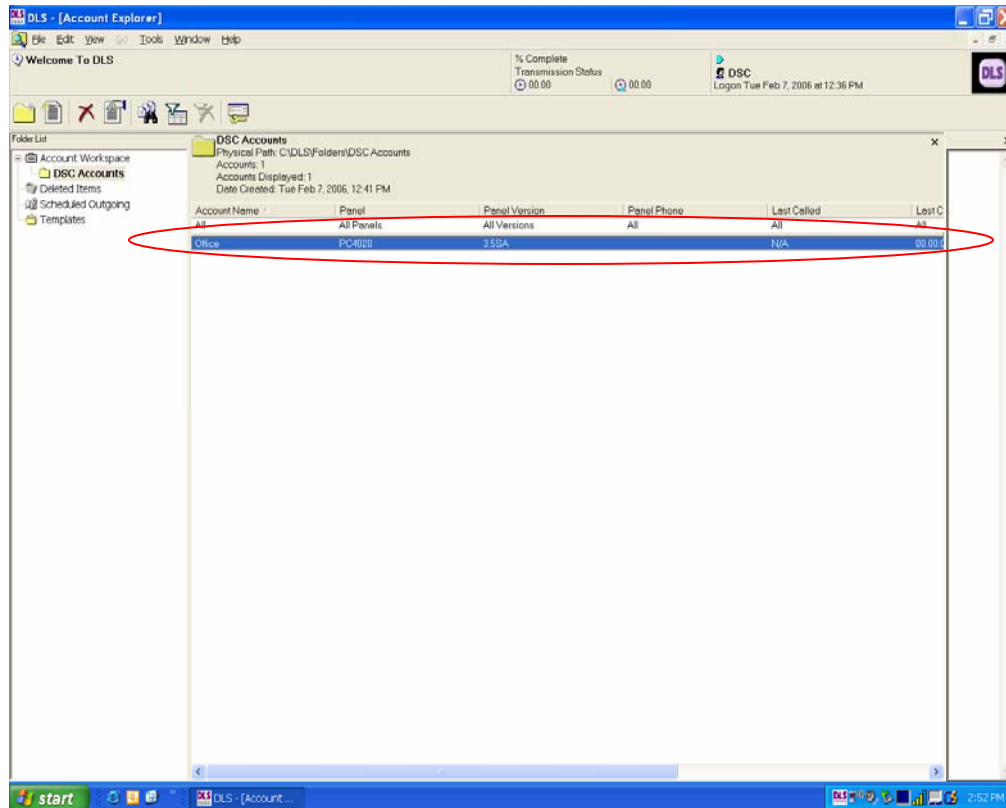
Enter the IP address of the computer running the TL1 Server in the *TCP/IP Module IP Address* text field then click 'OK'.

**Note: Do not use leading zeros when entering the IP address**

**18. Finish DLS2002SA TCP IP Configuration:**

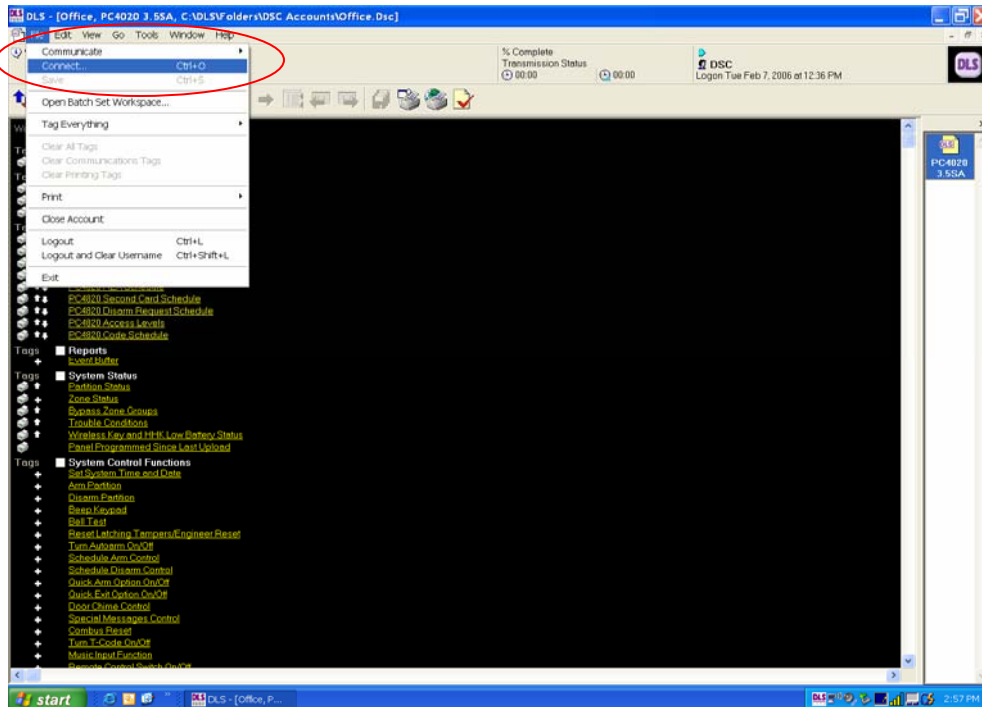
Click 'OK' to confirm the TCP IP connection.

### 19. Opening the Account for Uploading or Downloading:



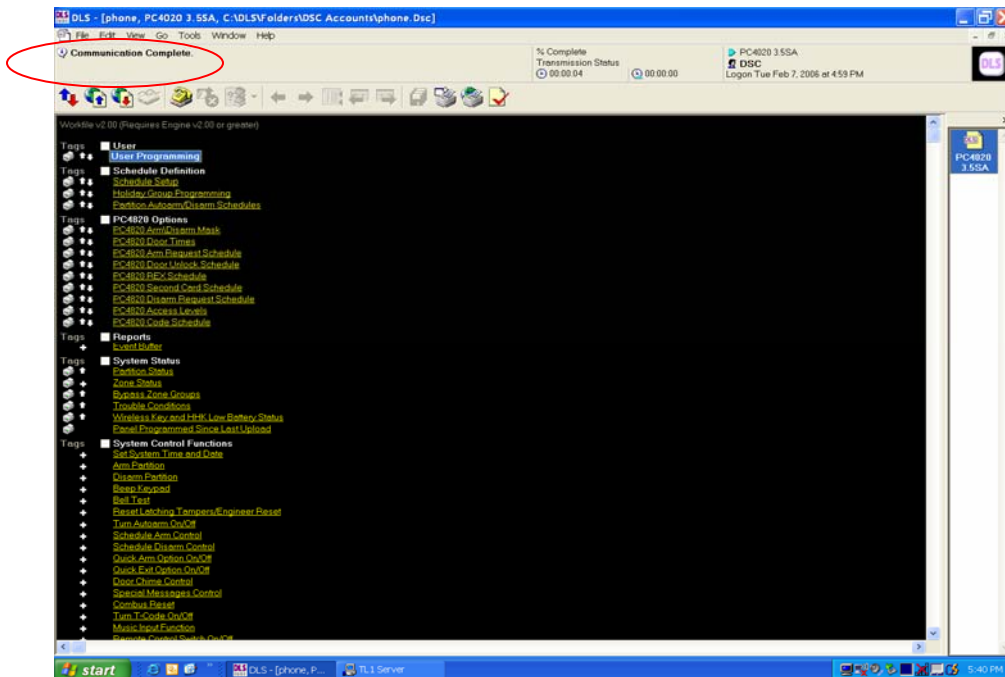
Double-click the account to open it.

## 20. Connecting to the Panel via the T-Link using the DLS Software:



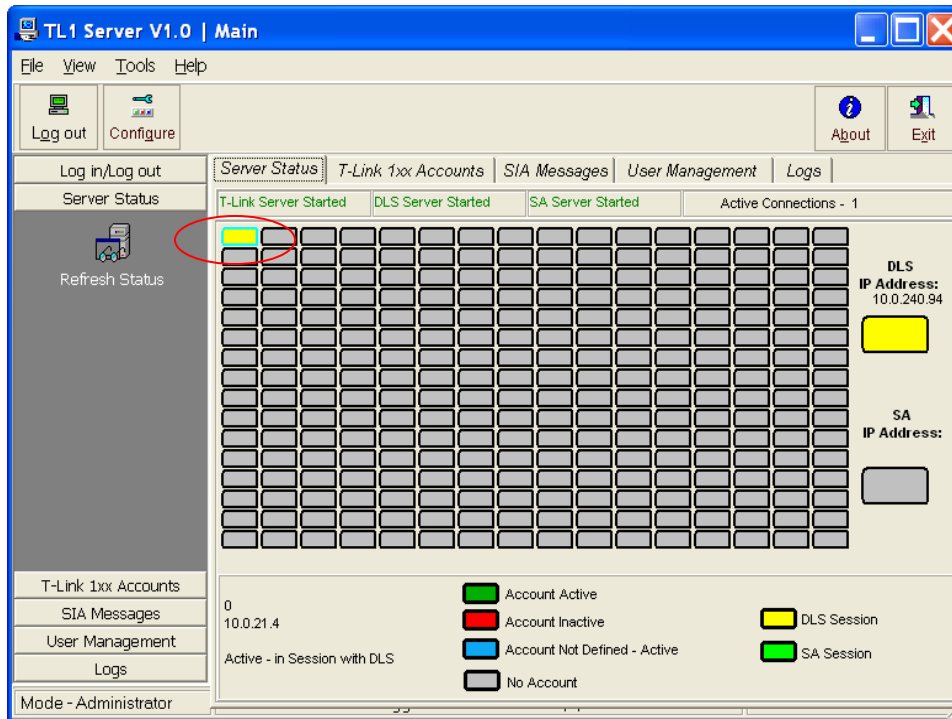
Click "File → Connect"

## 21. Establishing Communication from the DLS to the T-Link:



Once connected to the T-Link the status bar will indicate 'Communication Complete'.

## 22. Confirming Communication is Established on the TL1 Server:



The account block on the TL1 Server will change to yellow when a DLS session is in progress.

**Note:** Once the DLS session has been established information can be Uploaded/Downloaded as required.